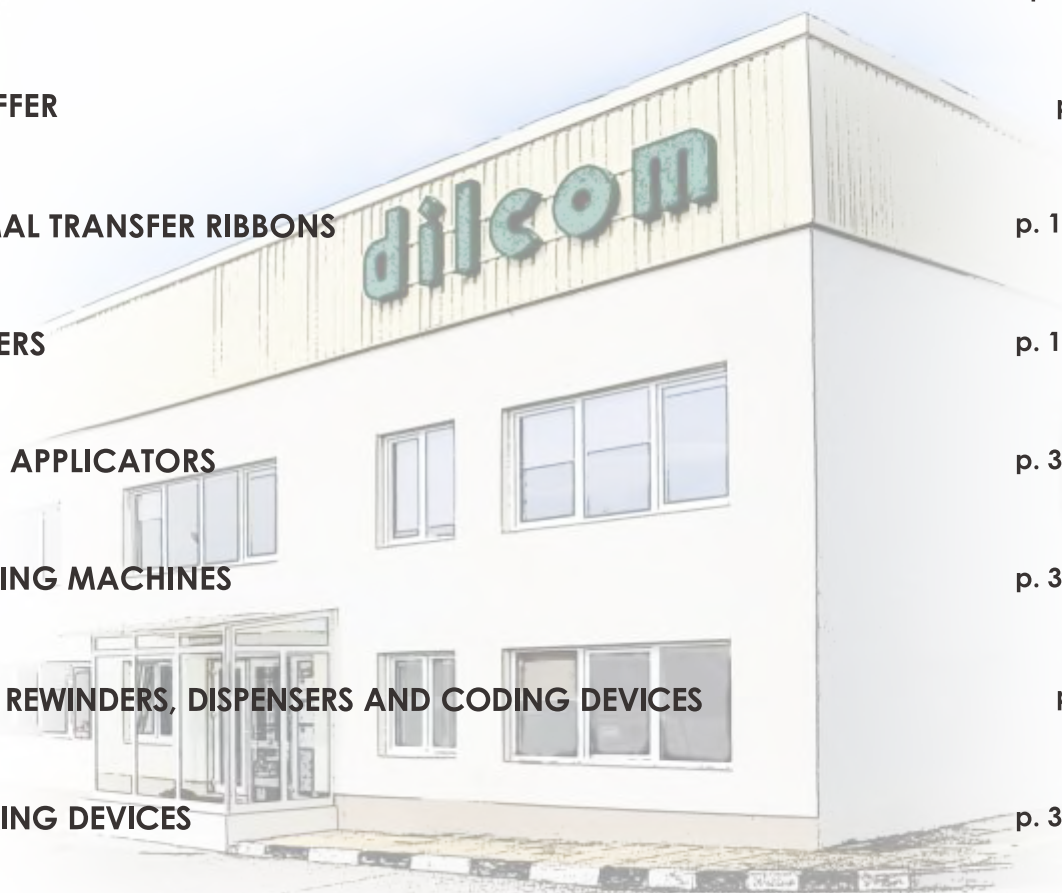




# TABLE OF CONTENTS

DILCOM BULGARIA LTD.	p. 1
PRINTING FACILITY	p. 2-3
WE PRODUCE	p. 4
TYPES OF LABELS AND TECHNOLOGIES	p. 5-14
WE OFFER	p. 15
THERMAL TRANSFER RIBBONS	p. 16-17
PRINTERS	p. 18-31
LABEL APPLICATORS	p. 32-33
LABELING MACHINES	p. 34-35
LABEL REWINDERS, DISPENSERS AND CODING DEVICES	p. 36
MARKING DEVICES	p. 37-39
BARCODE SCANNERS AND TERMINALS	p. 40-41
LABEL DESIGN SOFTWARE	p. 42
SERVICE	p. 43



# **Dilcom Bulgaria Ltd.**

## **Quality and Tailored Approach**

Dilcom Bulgaria was founded in 2002 and has been growing successfully for over 19 years. We offer all-around solutions in the sphere of labeling and product marking. Over the years the company developed successful partnerships with leading global manufacturers of barcode printers, scanners and terminals, automatic label applicators, software and more. In order to close the cycle of label production and guarantee complex client servicing, the company now has a contemporary printing facility where we produce a wide range of high-quality labels.

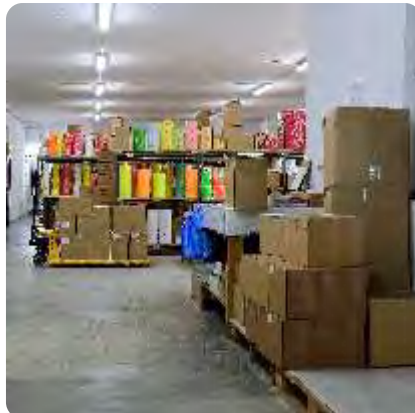
In order to guarantee the quality of the products and services we offer, Dilcom Bulgaria Ltd. is certified according to the international standards for quality management ISO 9001:2015, environmental management system ISO 14001:2015 and energy efficiency ISO 50001:2011.

In 2019, Dilcom became FSC® (Forest Stewardship Council) certified. Our FSC® License Code is FSC – C150329. The labels produced according to this standard guarantee that the wood products used come from sustainable sources thus supporting the conservation and protection of forests, wildlife and people.

The core values of the company are integrity, innovation, trust and mutual respect. The mission of our team of specialists is to offer our experience, professionalism and high-quality products to our customers.



- 6-color machine for high roll printing which allows the printing of high-quality durable labels;
- 6-color flexo machine which allows the production of multilayer labels;
- Multifunctional machine for hot foil printing and embossing;
- 6-color flexo machine with water-based inks that do not pollute the environment;
- Tricolor flexo machine with two stamps for the production of complex labels and cardboard;
- High-tech machine for the production of white and industrial labels with high capacity;
- Screen printing machine that allows printing in Braille, scratch-off labels and other finishing operations;





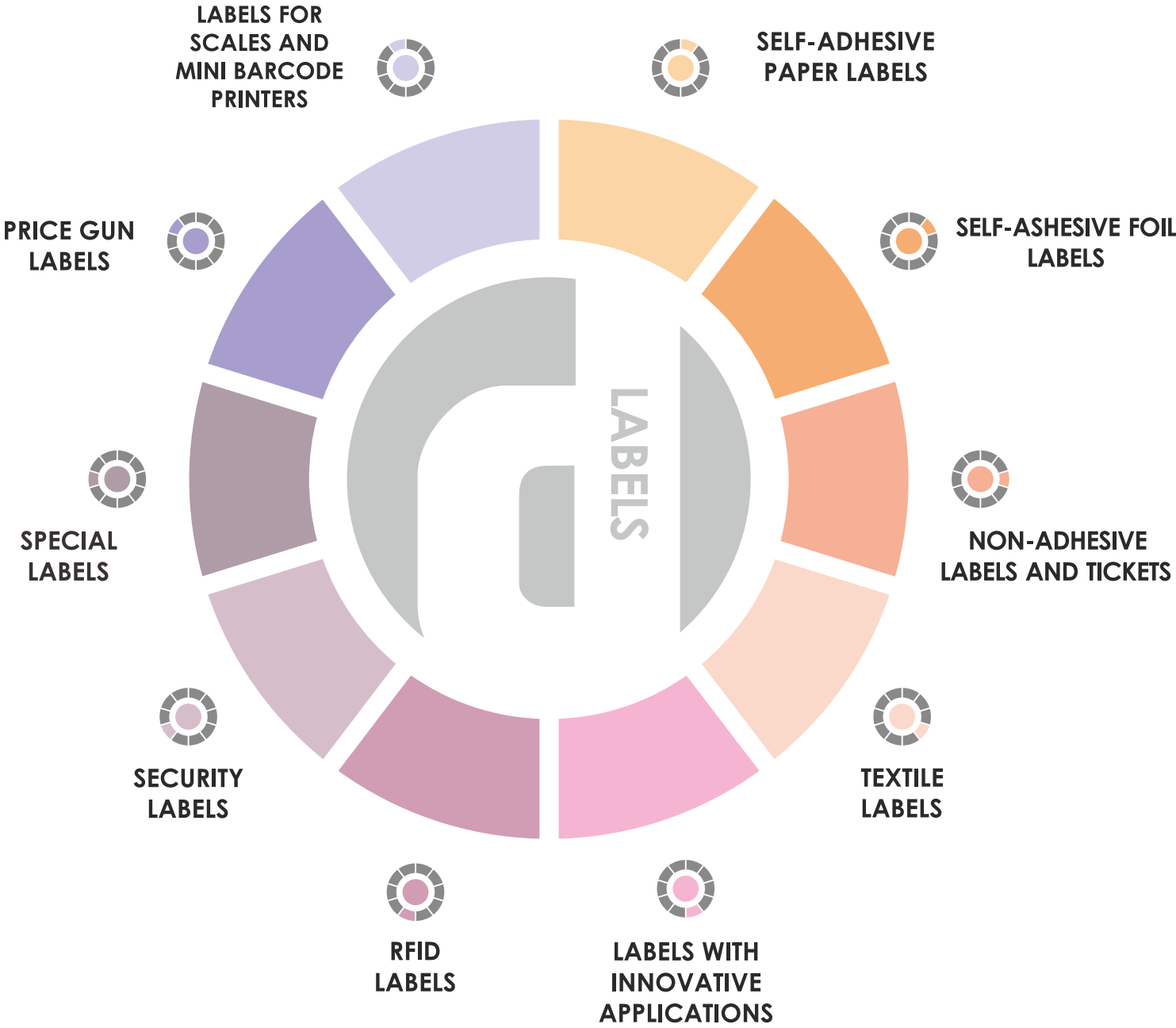
## PRODUCTION TECHNOLOGIES



- Digital system for printing full-color labels and finishing operations, allowing the production of labels with various shapes, without the need for stamps and clichés. Ability to print variable information on each label;
- Color test system GMG flexo proof, based on specialized software for certified color samples;
- Ultra-sound slitter for textile materials;
- Modular machine for printing, die cutting and automatic rewinding of label rolls;
- Automatic machine for rewinding and inspecting printed labels with a 100% guarantee for quality control;
- In-house design team;



# WE PRODUCE



## SELF-ADHESIVE PAPER LABELS



Self-adhesive paper labels are suitable for product identification in the wholesale and retail trade network, the food industry, logistics, transport, manufacturing and others. They can be produced with various face materials – matte, semi-gloss, gloss, as well as high-quality transfer paper in combination with a variety of adhesives.



TRADE



TRADE



TRADE

### APPLICATIONS





## SELF-ADHESIVE FOIL LABELS



Self-adhesive foil labels are more tear-resistant and more durable to weather conditions than paper labels. The main types produced by the company are polyethylene, polypropylene, polyester, vinyl and acrylic labels. They can be used on smooth, uneven, curved and rough surfaces and are suitable for flexible packaging, information signs as well as products requiring high-temperature resistance.

### APPLICATIONS



SPECIAL MATERIALS



TRADE



SPECIAL MATERIALS



LOGISTICS & TRANSPORT



SPECIAL MATERIALS





## NON-ADHESIVE LABELS, TAGS AND TICKETS



Non-adhesive labels are applicable in the cases when it is not possible or suitable to use self-adhesive labels. The main types of non-adhesive labels we produce are: **tickets**, **cardboard labels**, **polyester labels** and **polyester bracelets**. They find application in garden centers, parking systems, metallurgy, retail and others.



### APPLICATIONS





Labels made of taffeta are ideal for applications that require a barcode as the high-quality imprint is clearly legible. Satin labels are an aesthetic solution for marking of elegant textile products, luxury clothes and underwear. Another type of textile labels that Dilcom offers are **self-adhesive satin and taffeta labels**.

## APPLICATIONS



## PRODUCTION



SPECIAL MATERIALS



## PRODUCTION



SPECIAL MATERIALS



## PRODUCTION



SPECIAL MATERIALS



# LABELS WITH INNOVATIVE APPLICATIONS



One of Dilcom's niche specializations is the production of a wide range of labels with innovative applications. Among those are the weather-resistant **labels for flowers**, **self-adhesive jewelry labels**, **labels with a specially designed adhesive for tissues and wet wipes**, **water-soluble labels** with an adhesive layer which is easy to remove, various **multilayer labels** as well as **“scratch-off” labels**.

  
SPECIAL  
BARCODE

  
TRADE

  
PRODUCTION

  
SPECIAL  
BARCODE

  
TRADE

  
SPECIAL  
BARCODE

  
TRADE

## APPLICATIONS







**RFID** labels (tags) are most commonly used for identification and tracking of objects, products or goods. They are attached to or embedded in them and in this way give them an individual digital identification. They consist of two main components – an antenna which sends and receives signals and a chip (integrated circuit) that stores the recorded digital information (may contain a serial number, product information, batch, production date, etc.)

One of the advantages of the RFID technology compared to barcode labels is the ability to read multiple labels simultaneously in a very short time without requiring the RFID reader to have direct visual contact with the label. Products can be identified even when they are in boxes on pallets or on shelves. By comparison, when using a barcode, the reader reads the labels one by one and in direct line of sight.

**APPLICATIONS**

LOGISTIC & TRANSPORT

SPECIAL MATERIALS

PRODUCTION

LOGISTIC & TRANSPORT

SPECIAL MATERIALS

LOGISTIC & TRANSPORT

SPECIAL MATERIALS





# SECURITY LABELS



Security labels are a means of protection against tampering, or unsolicited access to the product during storing, transportation and warranty period. These labels can be printed with various information thus providing proof of authenticity at any given logistics stage. The main types of security labels produced by Dilcom are VOID labels and destructible labels.





Dilcom Bulgaria produces a new range of special labels suitable for industries such as the automotive industry, electronics, electrical engineering, mechanical engineering and others. As a partner and converter of 3M in the non-graphic products sector, Dilcom has the technical capability to laminate, die cut and cut a wide variety of self-adhesive tapes, foam materials, foils, electrical insulating and masking tapes and other flexible materials according to each customer's individual specifications and needs.

### APPLICATIONS



SPECIAL MATERIALS



SPECIAL MATERIALS



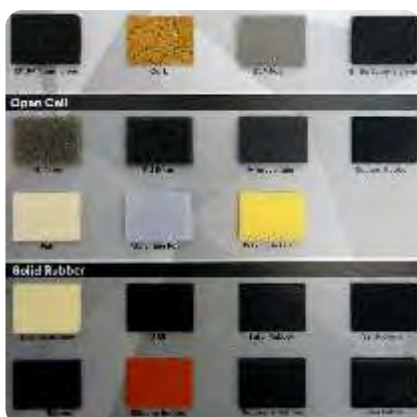
PRODUCTION



SPECIAL MATERIALS



PRODUCTION



# PRICE GUN LABELS



Price gun labels are produced from self-adhesive uncoated paper in the following colors: **white, fluorescent yellow, red, orange and green**. Price gun tags are most often used in manufacturing and retail for the marking of goods or details. Labels, trademarks or other text can be pre-printed on the labels.



## APPLICATIONS





## LABELS FOR SCALES AND MINI BARCODE PRINTERS



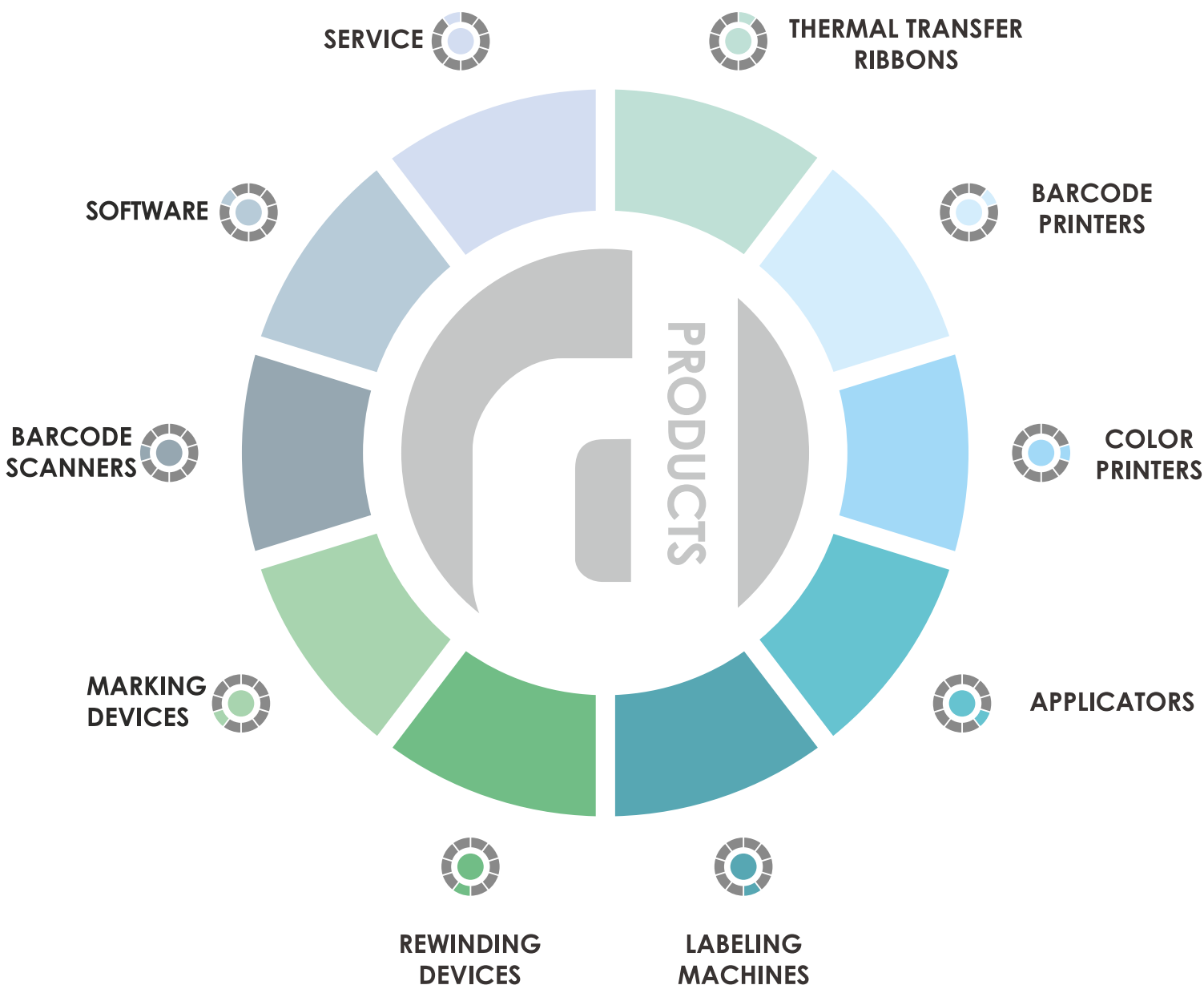
Permanent information such as a logo, address, phone and different signs can be pre-printed on the scale and mini barcode labels. The variable information such as weight, expiry date, barcode and price is printed by the scale at the time of weighing. These labels are ideal for the retail trade, meat processing and milk processing.

### APPLICATIONS





# WE OFFER





### **WAX ribbons**

They are economical and suitable for high-speed printing. They are distinguished with great performance even when the printhead is set at lower temperatures, thus extending its life. Wax ribbons find application in transport, logistics, the pharmaceutical industry, trade, textile and others.

### **WAX-RESIN ribbons**

They are suitable for high-speed printing. The printed image has excellent smear and scratch resistance. Wax-resin ribbons find application in the food industry, retail, electronics, electrical engineering, gardening and others.

## APPLICATIONS



TRADE



TRADE



HEALTHCARE



SPECIAL MATERIALS



## THERMAL TRANSFER RIBBON



### RESIN ribbons

The images printed with a resin ribbon have excellent resistance to mechanical abrasion, solvents and chemicals, extremely high temperatures, steam, machine oil, petrol, bleaching agents and sulfur acid. They find application in the heavy industry, textile industry, automotive industry and others.

### Near-Edge

“Near-edge” thermal transfer ribbons are specifically designed for the so-called “near-edge” printheads. They offer excellent productivity and allow for high-quality printing at higher speed. This ribbon type is developed with an innovative technology for the removal of static electricity.

### TEXTILE ribbons

They are specially designed resin ribbons, which can print on textile labels. The imprint is resistant to water washing, dry cleaning, chemical washing and dyeing, as well as to ironing at temperatures of up to 150°C. The standard textile ribbons are black, white, blue, green and red. Dilcom also offers them in gold and silver.



## APPLICATIONS





**Citizen Group** was founded in 1918 in Japan as a manufacturer of watches and calculators. In the following years the company developed and specialized in the production of a wide range of innovative print solutions. They also precisely designed their printers in order to meet the specific needs of customers in the different areas of the industry. **Citizen System** is a dependable global company with a well-developed distribution network covering the territory of all of Europe, the Middle East, Africa, the USA, Japan and China.

### APPLICATIONS



TRADE



LOGISTICS & TRANSPORT



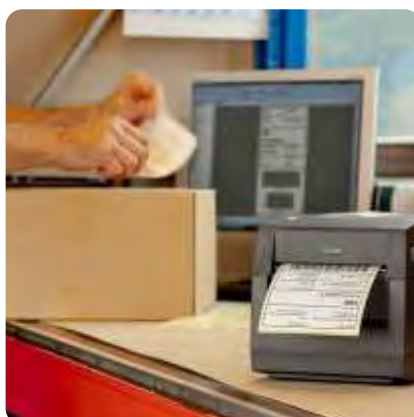
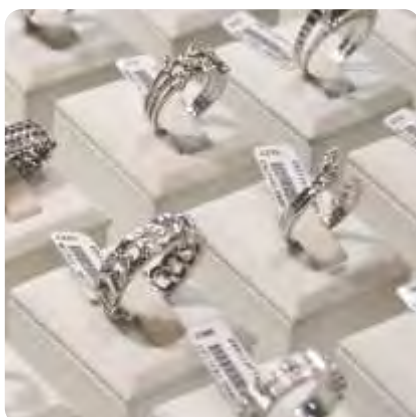
SPECIAL MATERIALS



TRAVEL & ENTERTAINMENT



SPECIAL MATERIALS







Their product range includes dirt-resistant label printers suitable for industrial settings and compact devices that find application in retail. The main advantage of the **Citizen** devices is their **metal housing** which protects the thermal head and ensures the strength and longevity of the printer. The innovative ARCP system keeps the thermal ribbon constantly stretched and guarantees the constant high quality of the imprint. The **Citizen** printers support two languages at the same time – ZPL and DMX and allow the printing of labels with different shapes and on different materials.



TRADE



TRADE



PRODUCTION

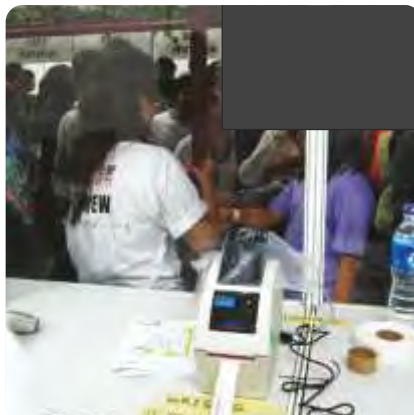
## APPLICATIONS





**TSC Ltd.** was founded in 1991 in Taiwan and specializes in research and development, marketing and production of barcode printers. Whether discussing desktop, industrial and mobile barcode printers or accessories and consumables, the **TSC** products are all distinguished by their easy-to-use design, stable craftsmanship and incomparable durability. The company's core belief is that excellent quality, complete technical support and reasonable pricing are the key to customer trust.

## APPLICATIONS



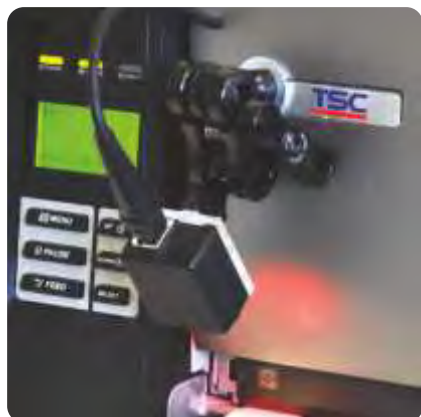
2", 4", 6", 8", 200 dpi, 300 dpi, 600 dpi



**TSC** produces a wide range of high-quality desktop, industrial and mobile printers at very competitive prices. They are available in direct thermal configuration or in a combination of direct thermal and thermal transfer. Various **additional options can be added to the printers such as a rotating knife, an external label stand, a peeler, a direct scanner connection, keyboard connectivity, a Bluetooth module, and more.**



## APPLICATIONS







**GoDEX** is a global engineering company specializing in the design and manufacturing of products for barcode printing. Founded in 1993 in Taiwan, the company now has offices in the US, Europe and China and a global distribution network spread all over the world. **GoDEX** focuses its production on innovative, reliable and easy to use products. The company's mission is directed entirely to the customer and the opportunity to offer them the best option on the market.

### APPLICATIONS





OPERATING WITHOUT A COMPUTER, WITH THE  
POSSIBILITY OF READING VARIOUS DATABASES



**GoDEX** offers a wide range of high-quality thermal transfer and direct thermal barcode label printers, which have their own software for label design. **GoLabel** has a multi-language interface, convenient settings for work without a computer, improved functions from drawing graphics and supports most standard **1D and 2D barcodes**. It allows the reading of various databases, as well as an option to connect with a commercial and warehouse software.



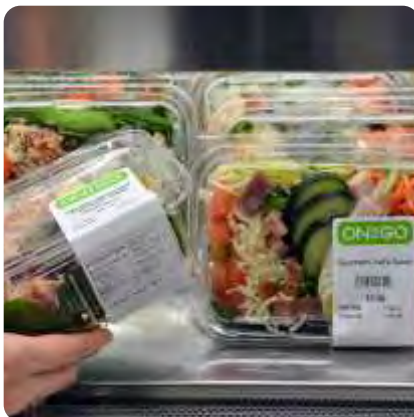
## APPLICATIONS





Since its founding in 1940 in Japan as a small neighborhood factory, **SATO** has been continuously working to provide high-quality products and services. Today the company has sales offices and servicing shops in more than 20 countries. In 1981 SATO created the first thermal transfer printer in the world with which it became a leader in labeling and product marking solutions in the retail field. **SATO** manufactures innovative and reliable systems for automatic recognition and offers all-around solutions combining hardware, software and consumables. They find application in a wide range of sectors such as manufacturing, logistics, the food industry and others.

## APPLICATIONS







**SATO** offers a wide range of label printers. Their industrial barcode printers are an excellent solution for heavy industries. They ensure the highest possible quality for the printing of barcodes and text, as well as label **RFID coding**. Their desktop printers are compact, cost effective, easy-to-use and provide the necessary flexibility for the sphere of logistics. Another part of SATO's product variety are their RFID solutions and specialized printers designed for e-commerce applications, etc.



## APPLICATIONS





Founded in 1950 in Japan, **Toshiba Tec** constantly aims to present the best labeling solutions in the retail and food industry, as well as logistics, warehousing and manufacturing. The company is a reliable provider of industrial solutions that increase the added value of the products offered. Today it has a well-developed distribution network, offices and service centers in over 100 countries and regions worldwide.

APPLICATIONS







**Toshiba** offers a wide range of products and services, among which are the industrial, desktop and mobile label barcode printers with a **“ribbon save” technology** which limits the use of the thermal transfer ribbon thus minimizing the cost of consumables and greatly reducing maintenance needs. One of the main advantages of the Toshiba product range are the “print and apply” systems they offer as well as the single tag printers for printing tags widely used in the textile industry.



TRAVEL & ENTERTAINMENT



SPECIAL MATERIALS



PRODUCTION



TRADE



SPECIAL MATERIALS



PRODUCTION

APPLICATIONS





The company was founded in Japan in 1942 as a small watch factory named Seiko. Years later, it became one of the world's largest manufacturers of digital printers, and visualization and printing equipment. **Epson** has offices in over 90 countries around the world and offers inkjet, laser, dye-sublimation, solvent, textile and dot matrix printers, scanners, and other electronic components. The company is constantly developing by offering revolutionary ideas and innovative products to companies in the advertising, medical, logistics and retail sectors around the world.

APPLICATIONS



PRODUCTION



SPECIAL MATERIALS



TRAVEL & ENTERTAINMENT



SPECIAL MATERIALS



PRODUCTION



SPECIAL MATERIALS







**Epson** offers a wide range of desktop, mobile and industrial **printers with an easy and intuitive software**, which allows operators to work without the need for special training. The printers are effective and reliable, and print detailed high-quality labels which are resistant to smudging, fading and other external factors. The printers allow printing on a wide range of materials including matte and glossy paper which makes them very suitable for advertising brochures, invitations and other **unique labels**. Owing to their high print speed and resolution, the **Epson** printers produce excellent quality labels.



APPLICATIONS

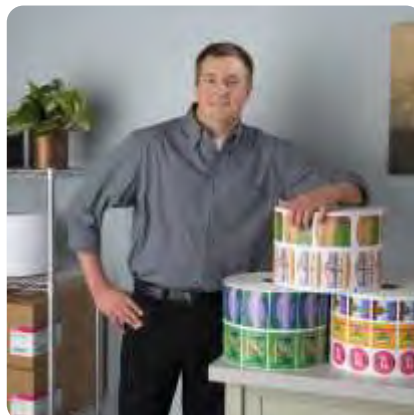




**Primera Technology, Inc.** was founded in 1998 and ever since became a leading manufacturer of color label printers and additional specialized equipment in the industrial sector. The company uses the latest inkjet technology with high resolution, and their products require no expenses for dies and die plates.

On 01.02.2019 the European branch of Primera Technology became **DTM Print GmbH**.

## APPLICATIONS







**Evolis Group** was founded in 2000 with headquarters in France and is a world leader in the production of card printers. Owing to their high quality, wide variety of products and presence on all continents, Evolis has achieved great popularity with more than 310,000 installations.

One of their newest products is the printer for price tags on plastic cards. The Edikio printer is compact and easy to use, allowing the owners of supermarkets, small bakeries, butcher shops, dairies, flower shops, etc. to design and print beautiful labels with professional designs. The imprint on plastic cards is extremely resistant to grease, alcohol, chemicals, water, detergents and high and low temperatures, making them suitable for a wide variety of commercial applications.



PRODUCTION

TRADE



PRODUCTION

TRADE



PRODUCTION

TRADE

APPLICATIONS





The **Primera** semi-automatic label applicators are an ideal solution for **labeling of cylindrical objects** – bottles, cans, jars, tubes as well as **flat surfaces** of rectangular or cone-shaped bottles, boxes, packages, bags, lids, etc. The applicators help to increase productivity and are suitable for small to mid-size production facilities.

Dilcom Bulgaria also offers semi-automatic label applicators suitable for cylindrical products manufactured by the Italian brand **Wide Range**. The main advantage of these applicators is that they can be combined with a barcode printer, which can print variable data such as date, time, barcode, batch number, text, etc. at the time of product labeling. In addition, the company's engineering team can further upgrade the machines according to each client's specific needs.

## APPLICATIONS



PRODUCTION

TRADE



PRODUCTION

TRADE

SPECIAL MATERIALS



PRODUCTION

TRADE

SPECIAL MATERIALS



MANUAL APPLICATORS,  
PRICE LABELERS



The **TOWA** manual label applicators significantly increase productivity and aid the operators' working processes when applying labels on products. They are suitable for labeling products with flat surfaces and cardboard boxes in small to medium production facilities. Each of the three TOWA applicators that Dilcom offers can work with self-adhesive labels, which can be 20 to 65 mm long and up to 30, 60, and 100 mm wide.

Dilcom Bulgaria offers **SATO**, **PRINTEX** and **BLITZ** price labelers. They are suitable for marking of prices, manufacture dates, batch numbers, expiry dates, promotions, logos, as well as industrial marking (marking during the production process of light industry enterprises).



APPLICATIONS







**Altech** is a manufacturer of labeling systems and machines, which print, code, and inspect self-adhesive labels on packaged consumer goods. The company introduced its first production labeling machine in 1991 in Italy and today has clients all over the world. Their product line includes thermal transfer printers suitable for industrial production, systems for variable information overprinting as well as highly productive labeling machines suitable for a wide range of products such as **boxes, tubes, jars, cans, plastic and glass bottles, pharmaceutical products, etc.** Altech's engineering team develops various configurations of machines such as systems for labeling of cylindrical objects with up to 200 mm wide front and back labels, systems for labeling of products with a flat surface with an option for overprinting variable information, etc.

## APPLICATIONS



PRODUCTION TRADE



PRODUCTION TRADE



PRODUCTION LOGISTICS & TRANSPORT



SPECIAL MATERIALS



## LABELING MACHINES



**Arca** is an Italian manufacturer of industrial automatic labeling systems and laser marking systems with 20 m/min to 150 m/min speed.

The company specializes in building all-around solutions in all areas of the manufacturing industry.

ARCA's design team can configure modern labeling machines for integration in any production department.

Arca's industrial systems are widely used in the pharmaceutical industry. The company's engineering team develops various solutions in the field of tracking and serialization of pharmaceutical products in order to avoid counterfeiting.

A special inkjet printer or laser can be integrated in Track & Trace systems in order to meet the high-quality, safety and productivity standards which are listed in the guidelines for good pharmaceutical manufacturing practices.



## APPLICATIONS





## LABEL REWINDERS, LABEL DISPENSERS AND CODING DEVICES



**The external label rewinder** is activated by a stepping motor and can work with various types of thermal transfer printers. It allows rewinding of labels on a core with a diameter of 1" to 3".

**Label dispensers** are used when manual labeling is required on products that are already packaged. They automatically unglue and dispense the self-adhesive label. They allow the addition of a codifier which you can print additional information with.

**Coding devices** are most often used for printing expiry dates, manufacture dates, and batch numbers. They work on the principle of hot stamping or with a roll of fusible ink.

### APPLICATIONS







**HSA Systems** is a leading manufacturer of industrial inkjet equipment. The company was founded in Denmark in 1993 and today offers products for coding and marking to clients worldwide. The **HSA** inkjet printers are most commonly used to print expiration dates, manufacture dates, graphic images, bar codes and batch numbers. The high print quality allows use on various surfaces such as glass, plastic, wood, etc. The **HSA** printers find application in many different industries among which are the food, cosmetics, and pharmaceutical industries.



APPLICATIONS





**EBS Ink-Jet Systeme GmbH** manufactures high-quality industrial ink-jet printers. The German company has established itself as one of the leading manufacturers of inkjet equipment with more than 35 years of experience in the sphere of product marking.

The EBS marking printers find application in various manufacturing and product identification sectors such as the food industry, alcohol industry, tobacco production, industrial manufacturing, the pharmaceutical industry, electronics, etc.

The EBS inkjet printers which use continuous ink jets (CIJ - Continuous Ink-Jet), are suitable for printing small characters - dates, times, expiry dates, batch numbers, logos, barcodes, etc.

The devices can print on all types of surfaces – paper/cardboard packages, OPP/PET foil, metal cans and aluminum caps, glass and plastic bottles, wood products and packaging, rubberized products, etc. In addition, the variety of available inks allows printing directly on food products. With care for the environment, the EBS printers are one of the most energy-efficient in the world with energy consumption of only 19 watts!

## APPLICATIONS



PRODUCTION



HEALTHCARE



PRODUCTION



LOGISTICS & TRANSPORT



PRODUCTION





The Handjet mobile marking printers are ultra-modern and innovative portable inkjet printers for product marking and coding. They are light, comfortable and wireless. The printers are completely portable and flexible – you can print personalized messages in almost all languages on various surfaces. With the help of the EBS mobile printers you can print text, graphics, symbols, 1D and 2D barcodes. Whatever the surface that needs to be marked or coded is – concrete, metal, glass, textile, plastic, cardboard, wood, etc. – Handjet will print precisely and clearly.



## APPLICATIONS







**Datalogic** was founded in 1972 in Bologna, Italy as a manufacturer of electronic devices. Today the company is specialized in the design and production of barcode scanners, mobile terminals and computers, and systems for visual and laser marking. **Datalogic** has over 2500 employees across the world with branches in the US, Brazil, Italy, Slovakia, Hungary and Vietnam. The mission of the organization is customer satisfaction through high-quality products, continuous services improvement and qualified advice.

### APPLICATIONS



TRADE



LOGISTICS & TRANSPORT



СПЕЦІАЛЬНІ МАТЕРІАЛИ



HEALTHCARE



LOGISTICS & TRANSPORT

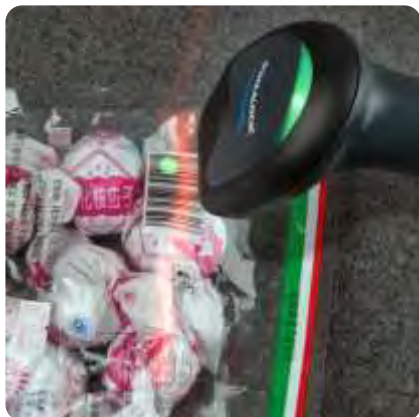




**Datalogic** is a global technology leader in process automation. Their continuous innovation helps to increase efficiency in many sectors such as trade, aviation, manufacturing, transport, logistics, warehousing, healthcare, etc. The Datalogic products are distinguished by their **wireless technology, IP67, large displays, laser barcode reading, various keyboard options, single or multiple base station options, wire or wireless connectivity, reading of 1D or 2D barcodes, etc.**



**APPLICATIONS**





**Dilcom Bulgaria** partners with software companies and offers clients software solutions specifically designed for the fields of warehousing, retail, manufacturing, etc. The different types of software – for traceability, design and barcode generation - have multi-language menu options and allow you to create your own applications for label printing. The company works with **BarTender** and **NiceLabel**.

The “**Basic**” version of the BarTender software allows you to fully design and print labels, magnetic cards and others. You can easily and intuitively create data forms with it. The “**Professional**” version additionally allows you to read data stored in CSV, database and Excel files, as well as more easily work with RFID labels. The “**automation**” version allows automatic printing as a result of data transactions and SDK requests. It also has the so-called “Intelligent Templates”™ feature for dynamic template creation. With the “**enterprise automation**” highest software version customers can also take advantage of a centralized management system, Web-based printing and centralized template storing.



**NiceLabel's** software offers new levels of functionality and simplicity. It allows for barcode design and printing as well as RFID coding, and is an excellent facilitator of GS1 and other standards. The more professional versions of the **NiceLabel** software have a system for document management, web-based printing and an integrated system for printing with SAP and Oracle.



## SERVICE



**Dilcom Bulgaria** offers service and technical support for a wide range of barcode printers, which can be carried out at our service centers, on-site or via phone call. Our technicians received certifications from Citizen, Godex, TSC, Primera, Toshiba and other centers. We offer the possibility of purchasing an extended warranty when buying a printer, providing a replacement device (if available) when repairs last more than 3 days, as well as out-of-warranty service for other thermal transfer printer brands such as Zebra, Intermex, SATO, Paxar, etc.

WARRANTY AND OUT-OF-WARRANTY SERVICE  
**ON-CALL SERVICE PHONE NUMBER: +359 889 599 144**  
Working hours: 7:30 – 22:30 Monday to Sunday  
AUTHORIZED SERVICE CENTERS IN THE COUNTRY

<b>VARNA:</b> Dilcom Bulgaria LTD Mikrosistemi Ltd.	<b>+359 52 / 599 144; +359 52/509 695; e-mail: service@dilcom.com</b> <b>+359 52 / 321 998</b>
<b>SOFIA:</b> Dilcom Bulgaria LTD	<b>+359 2 / 9714035; e-mail: service@dilcom.com</b>
<b>PLOVDIV:</b> Dilcom Bulgaria LTD	<b>+359 32 / 207 940; +359 887929092; e-mail: service@dilcom.com</b>
<b>BURGAS:</b> Karat Service 2000 Ltd. Blue Systems Ltd.	<b>+359 56 / 833 433; 070011107</b> <b>+359 885925846</b>
<b>GOTSE DELCHEV:</b> Garant 2004	<b>+359 896753276</b>
<b>SHUMEN:</b> EGE Computers Technosystem Bulgaria Ltd. X-COM Ltd.	<b>+359 54 / 892 070; +359 54 / 874 890</b> <b>+359 54 / 832 648</b> <b>+359 894 737 450</b>
<b>SLIVEN:</b> X-kom Ltd.	<b>+359 44 / 622 712</b>
<b>RUSE:</b> Saka Ltd. Dartech Ltd.	<b>+359 82 / 822 281</b> <b>+359 82 / 822 400</b>
<b>VELIKO TARNOVO:</b> Bonel Consult Ltd.	<b>+359 62 / 676 868</b>
<b>GABROVO:</b> Izotserviz Gabrovo Ltd.	<b>+359 66 / 803 212</b>
<b>DIMITROVGRAD:</b> Lerd Consult Ltd.	<b>+359 876 977 005</b>
<b>PLEVEN:</b> Electronics & Software Ltd.	<b>+359 64 / 801 660</b>

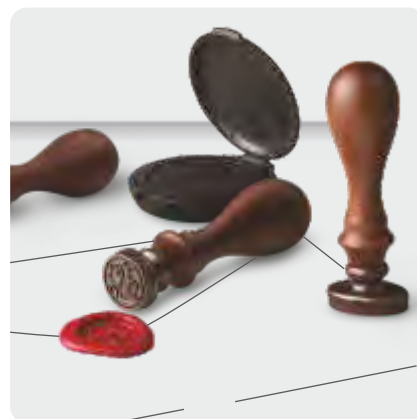




SELF-INKING STAMPS SHINY



**EXCELLENT QUALITY – COMPETITIVE PRICES**







[www.dilcom.com](http://www.dilcom.com)



**Varna**

2 Neptun St.  
West Industrial Zone

+359 52 599 144  
+359 877 599 144

[sales@dilcom.com](mailto:sales@dilcom.com)

**Plovdiv**

23 Nestor Abadzhiev St.

+ 359 32 207 940  
+359 887 545 458

[plovdiv@dilcom.com](mailto:plovdiv@dilcom.com)

**Sofia**

Mladost 4, 251 Okolovrasten pat  
Delta Business Center – office 205

+359 2 97 13 208  
+359 2 97 14 035

[sofia.sales@dilcom.com](mailto:sofia.sales@dilcom.com)